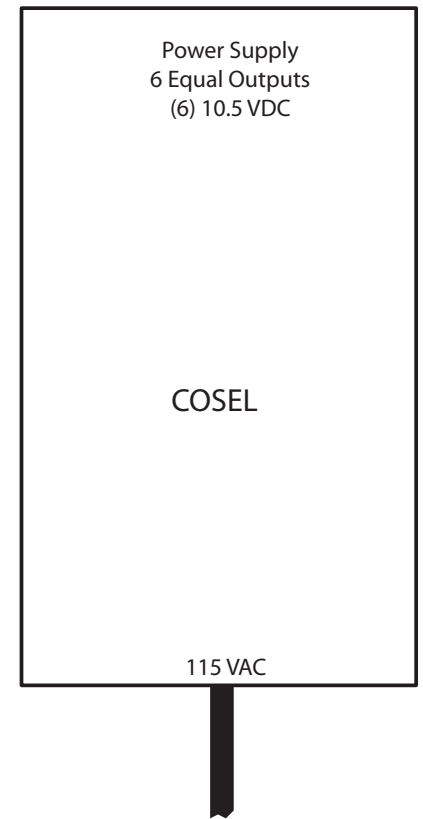
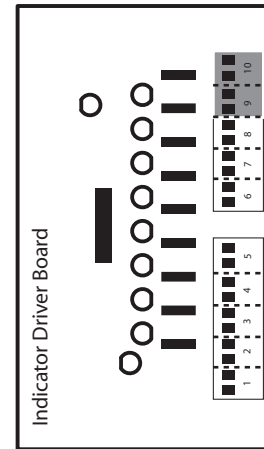
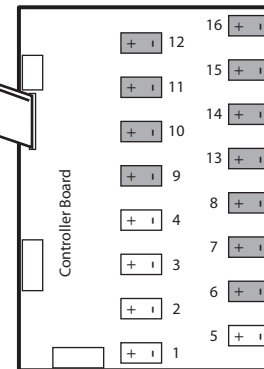
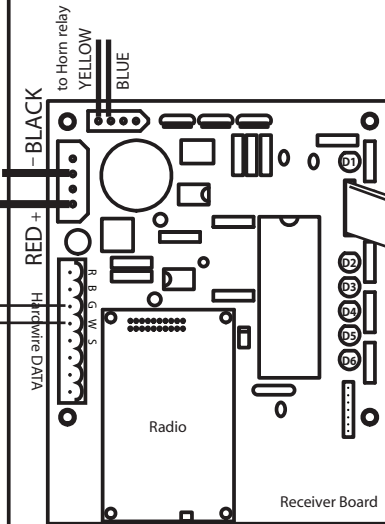
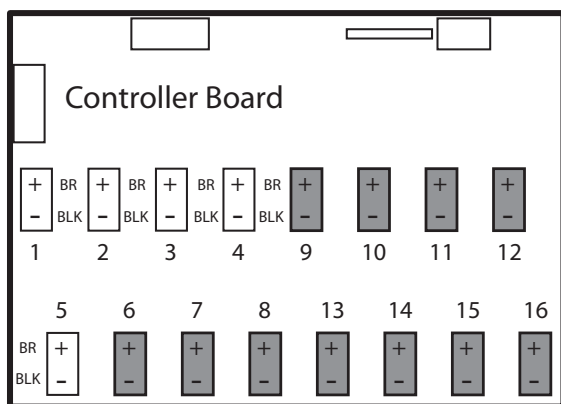


5 (Blue/White)
4 (Blue)
Hardwire DATA
(Numbers and Colors correspond
to RJ45 Connector on Console)



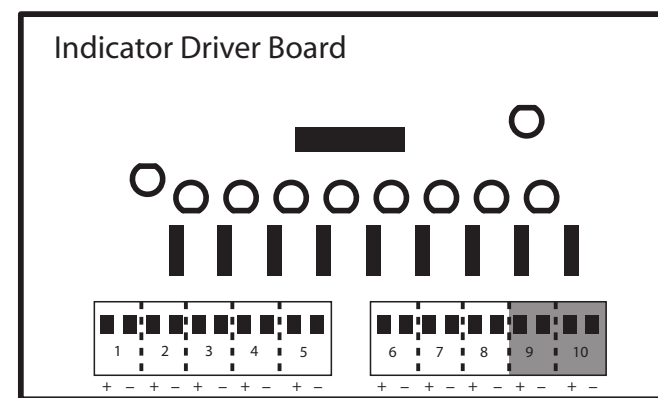
8214EMC Basketball Controller Plate

Scoreboard Type 400



- OUTPUTS
- 1.Timer
 - 2.Home Score/H TOL
 - 3.Guest Score/G TOL
 - 4.DATA IN (Ind Drv Brd)
 - 5.Fouls

NOT USED
6 ->16

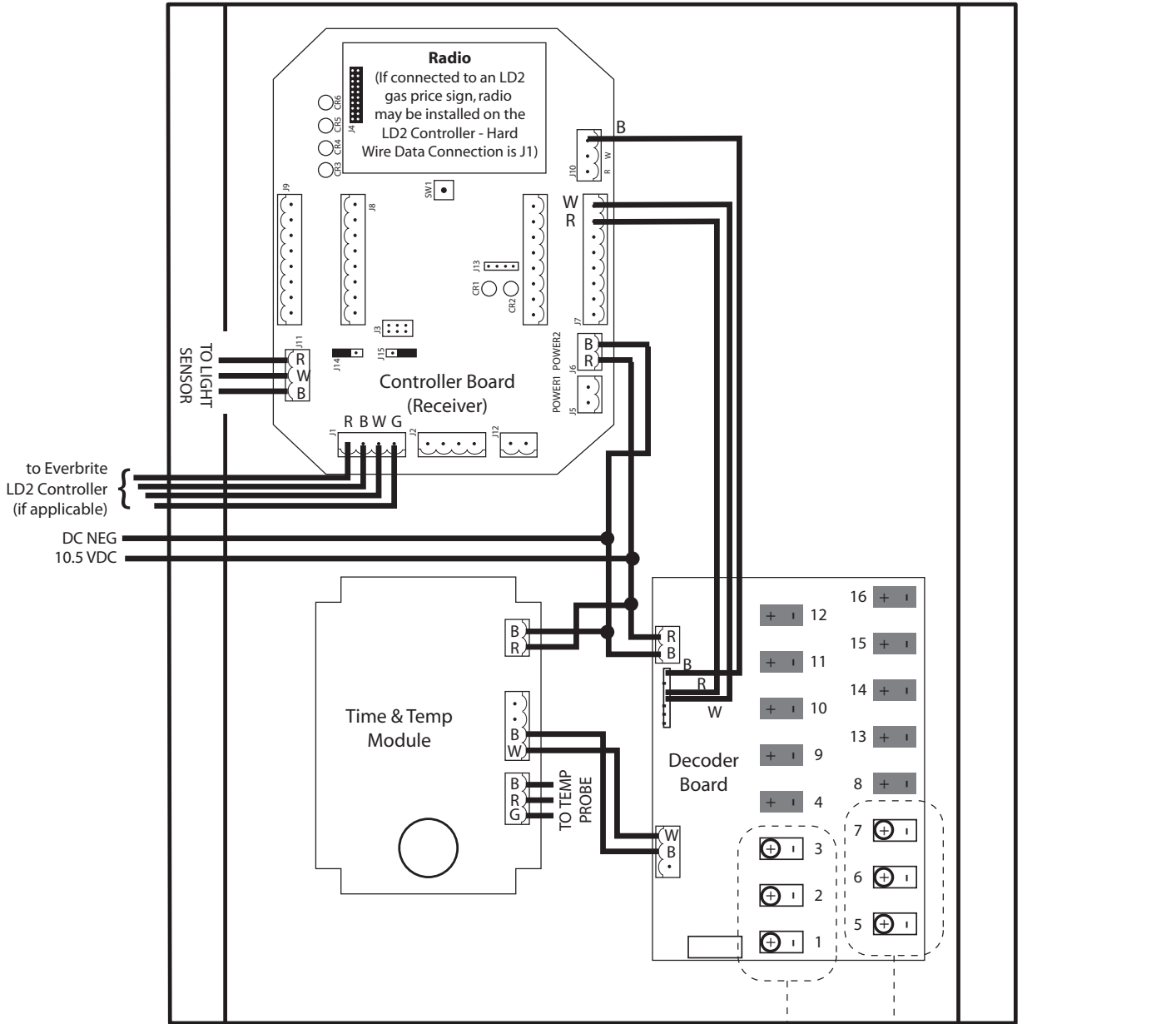


- OUTPUTS
- 1.H Bonus (inside)
 - 2.H Bonus (outside)
 - 3.Home Poss
 - 4.Top Colon
 - 5.Bottom Colon
 - 6.Guest Poss
 - 7.G Bonus (inside)
 - 8.G Bonus (outside)

DCPOS: Red (+)
DC NEG: Black (-)

NOT USED: 9,10

Basic EMC Controller Plate Wiring Information



Side A -	Side B
Output 1 (+) = Line 1 Data	Output 5 (+) = Line 1 Data
Output 2 (+) = Line 2 Data	Output 6 (+) = Line 2 Data
Output 3 (+) = Line 3 Data	Output 7 (+) = Line 3 Data

Side A Data = Side B Data