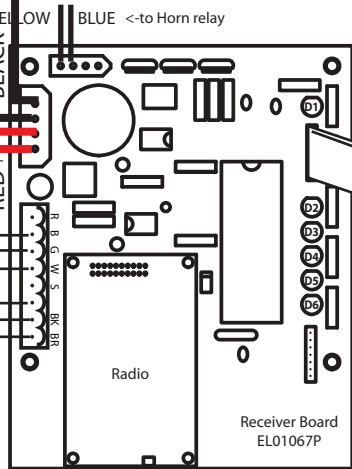
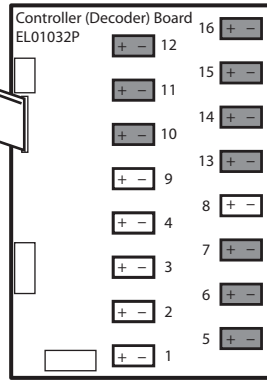
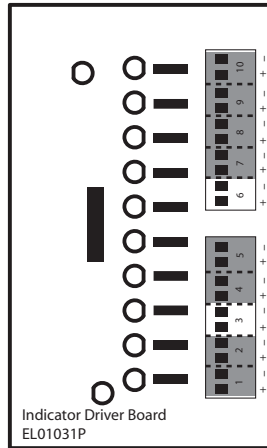
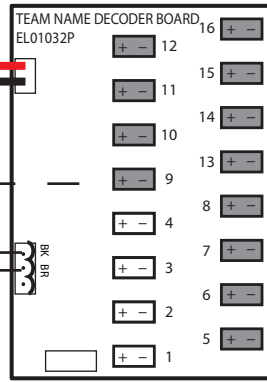


- OUTPUTS
1. Home Team-TOP
  2. Home Team-BOTTOM
  3. Guest Team-TOP
  4. Guest Team-BOTTOM

Data: Brown (+)

NOT USED  
5-16



**Hardwire DATA**

- Green (6\*)
- Blue/White (5\*)
- Blue (4\*)
- Green/White (3\*)

\*Numbers and colors correspond to RJ45 connector

- OUTPUTS
3. Home Possession
  6. Guest Possession

DATA: BLUE (-)

NOT USED  
1,2,4,5,7-10

- OUTPUTS
- 1.Timer
  2. Home Score / HTOL
  3. Guest Score / GTOL
  - Possession Ind
  8. Down / ToGo / Ball On /Period
  9. Delay of Game
- (+) Brown  
(-) Blue

NOT USED  
5-7,10,12-16

# 8436XTN Football Controller Plate

Scoreboard Type: 400

Power Supply Outputs (Full Brightness & Full Digits):

P1.1 ≈ 3.5A P1.2 ≈ 3.71A P1.3 ≈ 3.71A P1.4 ≈ 2.69A

P2.1 ≈ 3.71A P2.2 ≈ 3.71A P2.3 ≈ 2.69A P2.4 ≈ 3.00A

P3.1 ≈ 3.71A P3.2 ≈ 3.71A P3.3 ≈ 3.71A P3.4 ≈ 3.71A

NOTE: A Common DC Neg **must** be connected from an output on PS3 to a ground on PS4.

P4.1 ≈ 4.21A P4.2 ≈ 2.81A P4.3 ≈ 4.21A P4.4 ≈ OPEN

P5.1 ≈ 4.50A P5.2 ≈ 4.50A P5.3 ≈ 4.50A P5.4 ≈ 4.50A

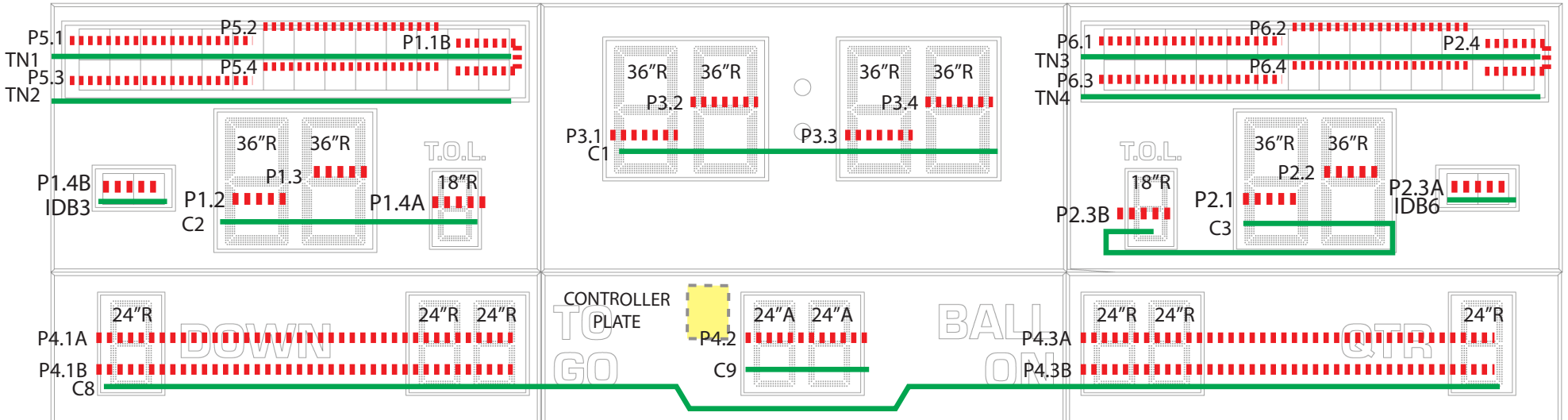
P6.1 ≈ 4.50A P6.2 ≈ 4.50A P6.3 ≈ 4.50A P6.4 ≈ 4.50

"C" refers to controller board output.

"TN" refers to Team Name Output.

"IDB" refers to Indicator Driver Board.

115 VAC / 60 Hz - 18.0 Amps  
REQUIRES 30A CIRCUIT



— = DATA    - - - - = 10.5VDC POWER